

Non-Chemical Services

Cut & Blowout

This includes everything from short pixies to medium and long-layered haircuts. This includes a blowout. (For super thick and extra-long hair, time and an extra cost may be added to the appointment)



Level 1- \$54

Level 2- \$58

Level 3- \$62

Level 4- \$66

Level 5- \$70

Level 4a- \$70

Level 6- \$74

Level 4aa- \$74

Level 7- \$78

Blowout is included in pricing, not getting a blowout does not affect pricing.

A trim is considered haircut pricing.

Clipper/Barber Cut

This is a clipper cut or scissor over comb cut on short hair with no style out or blow dry.



Level 1- \$42

Level 2- \$43

Level 3- \$44

Level 4- \$45

Level 5- \$46

Level 4a- \$46

Level 6- \$47

Level 4aa- \$47

Level 7- \$48

A trim is considered haircut pricing.

Detangling \$50+

\$50 for 45 minutes or less, additional time is charged \$17 per every 15 minutes or less.



Level 1- \$52+

Level 2- \$52+

Level 3- \$52+

Level 4- \$52+

Level 5- \$52+

Level 4a- \$52+

Level 6- - \$52+

Level 4aa- \$52+

Level 7- \$52+

Does not include haircut.

Bang Trim

Bang trim is just a haircut for your bangs/fringe. We can cut them wet or dry, and can be added on to any color, perm, or conditioning services.



Level 1- \$17

Level 2- \$17

Level 3- \$17

Level 4- \$17

Level 5- \$17

Level 4a- \$17

Level 6- \$17

Level 4aa- \$17

Level 7- \$17

Does not include blow-dry.

Blow Out

In its simplest form, a blowout means the art of drying your hair after a wash into the desired style. With a blowout, you can create curly hair, straight hair or subtle waves. For thick and dense hair there may be an additional charge.



Level 1- \$39

Level 2- \$41

Level 3- \$43

Level 4- \$45

Level 5- \$47

Level 4a- \$47

Level 6- \$49

Level 4aa- \$49

Level 7- \$51

Does not include haircut.

Child's Cuts

Kiddos need cuts too! Anyone under 10 is considered a child's cut. There might even be a sweet treat waiting at the end!



Level 1- \$36

Level 2- \$38

Level 3- \$40

Level 4- \$42

Level 5- \$44

Level 4a- \$44 (not accepting children's cuts)

Level 6- \$46

Level 4aa- \$46 (not accepting children's cuts)

Level 7- \$48

Special Occasion/Updo

An updo is a type of hairstyle that involves the hair being up and out of the face. The hair is kept in place with pins or bands to prevent the hair from falling. Updos are versatile and can be created to complement many looks.



Level 1- \$107

Level 2- \$107

Level 3- \$107

Level 4- \$107

Level 5- \$107

Level 4a- \$107

Level 6- \$107

Level 4aa- \$107

Level 7- \$107

Does not include haircut or shampoo.

Waxing Services

Waxing's (Lip, chin, brow)

Remove unwanted hair quickly and discreetly! This can be added on to any other service.



<u>Lip</u>	<u>Chin</u>	<u>Brow</u>
Level 1- \$15	Level 1- \$14	Level 1- \$17
Level 2- \$15	Level 2- \$14	Level 2- \$17
Level 3- \$15	Level 3- \$14	Level 3- \$17
Level 4- \$15	Level 4- \$14	Level 4- \$17
Level 5- \$15	Level 5- \$14	Level 5- \$17
Level 4a- \$15	Level 4a- \$14	Level 4a- \$17
Level 6- \$15	Level 6- \$14	Level 6- \$17
Level 4aa- \$15	Level 4aa- \$14	Level 4aa- \$17
Level 7- \$15	Level 7- \$14	Level 7- \$17

Color Services

Pricing is based on 120g of color or less unless stated otherwise. Does not include haircut. After 120g, a \$25 “additional mix” charge will be added for every additional 120g or less.

If hair is in fragile condition, we will use a lightener or color with Bonder inside for an additional \$36 charge per mix. Bonder will help rebuild the bonds in your hair and prevent up to 70% breakage, ensuring soft, shiny hair after a chemical service.

Root-to-End Color

Whether changing up your whole look or refreshing what you already have, this service is the one. Cover your roots while adding depth or tone to your ends!



Level 1- \$119

Level 2- \$123

Level 3- \$127

Level 4- \$131

Level 5- \$135

Level 4a- \$135

Level 6- \$140

Level 4aa- \$140

Level 7- \$143

Pricing based on 240g of color or less, unless stated otherwise. Does not include haircut. After 240g, a \$25 “additional mix” charge will be added for every additional 120g or less.

Root Touch Up

When the goal is to shift your natural color, cover grays, or both - this is the one for you.

Color is applied at the scalp- on the new growth- during this maintenance service.



Level 1- \$77

Level 2- \$81

Level 3- \$85

Level 4- \$89

Level 5- \$93

Level 4a- \$93

Level 6- \$97

Level 4aa- \$97

Level 7- \$101

Pricing based on 120g of color or less. Does not include haircut. After 120g, a \$25 “additional mix” charge will be added for every additional 120g or less.

Custom Balancing Glaze

Your hair feels dull, and you'd like a little sparkle. A shine gloss treatment can range from clear (with no commitment to maintenance) to rose, chestnut, eggplant... you name it!



Level 1- \$78

Level 2- \$82

Level 3- \$85

Level 4- \$90

Level 5- \$94

Level 4a- \$94

Level 6- \$99

Level 4aa- \$99

Level 7- \$102

Pricing based on 120g of color or less, unless stated otherwise. Does not include haircut. After 120g, a \$25 "additional mix" charge will be added for every additional 120g or less.

10 Min Root Touch Up

The fastest root color around! Do you need to be in and out of the salon quick? Don't want to sit around all day? See if our 10-minute Root Touch Up is for you!



Level 1- \$77

Level 2- \$81

Level 3- \$85

Level 4- \$89

Level 5- \$93

Level 4a- \$93

Level 6- \$97

Level 4aa- \$97

Level 7- \$101

Pricing based on 120g of color or less. Does not include haircut. After 120g, a \$25 "additional mix" charge will be added for every additional 120g or less.

Root Smudge + Custom Balancing Glaze

Want a softness to your dimension that gives a subtle lived-in look & allows for lower maintenance? This service will blend out your root area and tone your ends. Does not include blonding service.



Level 1- \$122

Level 2- \$126

Level 3- \$130

Level 4- \$134

Level 5- \$137

Level 4a- \$137

Level 6- \$141

Level 4aa- \$141

Level 7- \$144

Pricing based on 240g of color or less, unless stated otherwise. Does not include haircut. After 240g, a \$25 "additional mix" charge will be added for every additional 120g or less.

Eyebrow Tint

Eyebrow tinting is the process of applying semi-permanent dye to enhance, shape, and define your brows. Brow tinting gives the appearance of thicker, more accentuated brows with the goal being to match your natural brow color whenever possible. Longevity based on skincare routine.



Level 1- \$20

Level 2- \$21

Level 3- \$22

Level 4- \$23

Level 5- \$24

Level 4a- \$24

Level 6- \$25

Level 4aa- \$25

Level 7- \$26

Men's Camo

Natural looking men's grey blending. Requires no maintenance... get it done as often as you get your hair cut! People will notice you look different, but not that you colored your hair! Only takes 5-10 min to process.



Level 1- \$52

Level 2- \$56

Level 3- \$60

Level 4- \$64

Level 5- \$68

Level 4a- \$68

Level 6- \$72

Level 4aa- \$72

Level 7- \$76

Pricing based on 120g of color or less. Does not include haircut. After 120g, a \$25 "additional mix" charge will be added for every additional 120g or less.

Dimensional Color

Pricing based on 120g of color or less, unless stated otherwise. Does not include haircut. After 120g, a \$25 “additional mix” charge will be added for every additional 120g or less.

If hair is in fragile condition, we will use lightener or color with Bonder inside for an additional \$36 charge per mix. Bonder will help rebuild the bonds in your hair and prevent up to 70% of breakage, ensuring soft, shiny hair after a chemical service.

Balayage

Balayage is a premium coloring technique, invented in France over 40 years ago. It uses a free-hand sweeping method, allowing you to achieve that gentle sun-kissed effect. Beautiful, blended effects in every color imaginable are the hallmark of this technique. Accent/partial/full will give same effects as a foil, but with a softer root area that will blend into your base color.



<u>Accent Balayage (10 or less pieces)</u>	<u>Optimal Accent Balayage with Custom Balancing Glaze (10 or less pieces)</u>
Level 1- \$59	Level 1- \$104
Level 2- \$63	Level 2- \$108
Level 3- \$67	Level 3- \$112
Level 4- \$71	Level 4- \$116
Level 5- \$75	Level 5- \$120
Level 4a- \$75	Level 4a- \$120
Level 6- \$78	Level 6- \$124
Level 4aa- \$78	Level 4aa- \$124
Level 7- \$82	Level 7- \$128

Pricing based on 30g of color or less, unless stated otherwise. Does not include haircut. After 30g, a \$25 “additional mix” charge will be added for every additional 120g or less.

If hair is in fragile condition, we will use lightener or color with Bonder inside for an additional \$36 charge per mix. Bonder will help rebuild the bonds in your hair and prevent up to 70% of breakage, ensuring soft, shiny hair after a chemical service.

Optimal service will be based on 150g of color or less and include a custom balancing glaze or vivid overlay.

<u>Partial Balayage (11-30 pieces)</u>	<u>Optimal Partial Balayage with Custom Balancing Glaze (11-30 pieces)</u>
Level 1- \$92	Level 1- \$137
Level 2- \$96	Level 2- \$141
Level 3- \$100	Level 3- \$145
Level 4- \$104	Level 4- \$149
Level 5- \$108	Level 5- \$153
Level 4a- \$108	Level 4a- \$153
Level 6- \$112	Level 6- \$157
Level 4aa- \$112	Level 4aa- \$157
Level 7- \$116	Level 7- \$161

Pricing based on 60g of color or less, unless stated otherwise. Does not include haircut. After 60g, a \$25 “additional mix” charge will be added for every additional 120g or less.

If hair is in fragile condition, we will use lightener or color with Bonder inside for an additional \$36 charge per mix. Bonder will help rebuild the bonds in your hair and prevent up to 70% of breakage, ensuring soft, shiny hair after a chemical service.

Optimal service will be based on 180g of color or less and include a custom balancing glaze or vivid overlay.

<u>Full Balayage (30+ pieces)</u>	<u>Optimal Full Balayage with Custom Balancing Glaze (31+ pieces)</u>
Level 1- \$119	Level 1- \$164
Level 2- \$123	Level 2- \$168
Level 3- \$127	Level 3- \$172
Level 4- \$131	Level 4- \$176
Level 5- \$135	Level 5- \$180
Level 4a- \$135	Level 4a- \$180
Level 6- \$139	Level 6- \$184
Level 4aa- \$139	Level 4aa- \$184
Level 7- \$143	Level 7- \$188

Pricing based on 120g of color or less, unless stated otherwise. Does not include haircut. After 120g, a \$25 “additional mix” charge will be added for every additional 120g or less.

If hair is in fragile condition, we will use lightener or color with Bonder inside for an additional \$36 charge per mix. Bonder will help rebuild the bonds in your hair and prevent up to 70% of breakage, ensuring soft, shiny hair after a chemical service.

Optimal service will be based on 240g of color or less and include a custom balancing glaze or vivid overlay.

Ombre

Ombre is a premium color service that features the hair being colored gradually from dark to light. Three colors melting together This service offers seamless, all-over graduated hair color with a beautiful dimension.



<u>Ombre</u>	<u>Optimal Ombre with Custom Balancing Glaze</u>
Level 1- \$231	Level 1- \$273
Level 2- \$243	Level 2- \$285
Level 3- \$256	Level 3- \$298
Level 4- \$267	Level 4- \$309
Level 5- \$279	Level 5- \$321
Level 4a- \$279	Level 4a- \$321
Level 6- \$291	Level 6- \$333
Level 4aa- \$291	Level 4aa- \$333
Level 7- \$303	Level 7- \$345

Pricing based on 360g of color or less, unless stated otherwise. Does not include haircut. After 360g, a \$25 “additional mix” charge will be added for every additional 120g or less.

If hair is in fragile condition, we will use lightener or color with Bonder inside for an additional \$36 charge per mix. Bonder will help rebuild the bonds in your hair and prevent up to 70% of breakage, ensuring soft, shiny hair after a chemical service.

Optimal service will be based on 480g of color or less and include a custom balancing glaze or vivid overlay.

Accent Foil (10 foils or less)

You like dimension in your hair! During this service we tackle highlights in the areas that make the biggest impact when your hair is styled, like your hairline, part, and money piece. If you like to add dimensional lowlights (darker pieces adding depth throughout hair), see second color pricing.



<u>Accent Foil</u>	<u>Optimal Accent Foil with Custom Balancing Glaze</u>
---------------------------	---

Level 1- \$59	Level 1- \$104
Level 2- \$63	Level 2- \$108
Level 3- \$67	Level 3- \$112
Level 4- \$71	Level 4- \$116
Level 5- \$75	Level 5- \$120
Level 4a- \$75	Level 4a- \$120
Level 6- \$78	Level 6- \$124
Level 4aa- \$78	Level 4aa- \$124
Level 7- \$82	Level 7- \$128

Pricing based on 30g of color or less, unless stated otherwise. Does not include haircut. After 30g, a \$25 “additional mix” charge will be added for every additional 120g or less.

If hair is in fragile condition, we will use lightener or color with Bonder inside for an additional \$36 charge per mix. Bonder will help rebuild the bonds in your hair and prevent up to 70% of breakage, ensuring soft, shiny hair after a chemical service.

Optimal service will be based on 150g of color or less and include a custom balancing glaze or vivid overlay.

Partial Foil (11-30 foils throughout head or part of head)

Highlights will be focused on the top of the head, crown, and hairline instead of whole head. It can give a variety of results based on the placement of foils. Highlights can spill over the top of the rest of your hair giving a full-like look with a dark underneath, or highlights can be scattered throughout hair to add a sprinkle of contrast. If you like to add dimensional lowlights (darker pieces adding depth throughout hair), see second color pricing.



<u>Partial Foil</u>	<u>Optimal Partial Foil with Custom Balancing Glaze</u>
Level 1- \$92	Level 1- \$137
Level 2- \$96	Level 2- \$141
Level 3- \$100	Level 3- \$145
Level 4- \$104	Level 4- \$149
Level 5- \$108	Level 5- \$1153
Level 4a- \$108	Level 4a- \$153
Level 6- \$112	Level 6- \$157
Level 4aa- \$112	Level 4aa- \$157
Level 7- \$116	Level 7- \$161

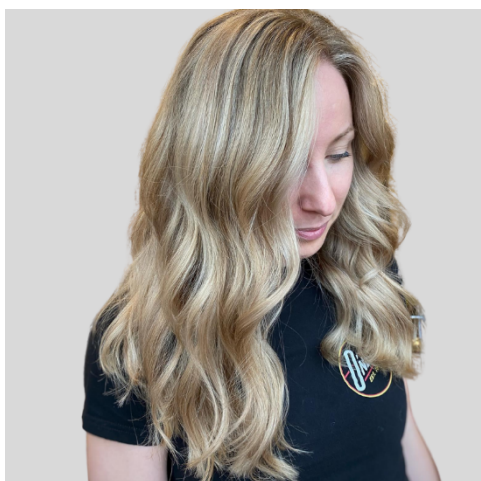
Pricing based on 60g of color or less, unless stated otherwise. Does not include haircut. After 60g, a \$25 “additional mix” charge will be added for every additional 120g or less.

If hair is in fragile condition, we will use lightener or color with Bonder inside for an additional \$36 charge per mix. Bonder will help rebuild the bonds in your hair and prevent up to 70% of breakage, ensuring soft, shiny hair after a chemical service.

Optimal service will be based on 180g of color or less and include a custom balancing glaze or vivid overlay.

Full Foil (31+ foils)

This service adds the **MOST** blonde out of all the foil choices. Highlights will be visible all throughout your hair, including the underneath. If you like to add dimensional lowlights (darker pieces adding depth throughout hair), see second color pricing.



<u>Full Foil</u>	<u>Optimal Full Foil with Custom Balancing</u>
Level 1- \$119	Level 1- \$164
Level 2- \$123	Level 2- \$168
Level 3- \$127	Level 3- \$172
Level 4- \$131	Level 4- \$176
Level 5- \$135	Level 5- \$180
Level 4a- \$135	Level 4a- \$180
Level 6- \$139	Level 6- \$184
Level 4aa- \$139	Level 4aa- \$184
Level 7- \$143	Level 7- \$188

Pricing based on 120g of color or less, unless stated otherwise. Does not include haircut. After 120g, a \$25 “additional mix” charge will be added for every additional 120g or less.

If hair is in fragile condition, we will use lightener or color with Bonder inside for an additional \$36 charge per mix. Bonder will help rebuild the bonds in your hair and prevent up to 70% of breakage, ensuring soft, shiny hair after a chemical service.

Optimal service will be based on 240g of color or less and include a custom balancing glaze or vivid overlay.

2nd Color

For those times you want your stylist to throw in a secondary color to add to your hair, this service is for you. For instance, you get bored with one shade of blonde color and would love a medium blonde mixed into your usual highlights for depth and shine. Or you want to dabble in reds, but everybody knows that redheads have MANY different colors mixing through their hair. Why not highlight with a copper AND a strawberry? One big, happy, multi-dimensional feast for the eyes!



Level 1- \$25

Level 2- \$25

Level 3- \$25

Level 4- \$25

Level 5- \$25

Level 4a- \$25

Level 6- \$25

Level 4aa- \$25

Level 7- \$25

Pricing based on 120g of color or less, unless stated otherwise. Does not include haircut. After 120g, a \$25 “additional mix” charge will be added for every additional 120g or less.

If hair is in fragile condition, we will use lightener or color with Bonder inside for an additional \$36 charge per mix. Bonder will help rebuild the bonds in your hair and prevent up to 70% of breakage, ensuring soft, shiny hair after a chemical service.

Blonding/Brighten/Tip out the Ends- Add-on to any Blonding service.

Love your blonde but just feeling a little dull? Give your ends the refresh it needs while your foils are processing for an all-over POP of blonde.



<u>Partial Tip Out (less than 30 pieces)</u>	<u>Full Tip Out (more than 31 pieces)</u>
Level 1- \$44 or less	Level 1- \$69
Level 2- \$44 or less	Level 2- \$69
Level 3- \$44 or less	Level 3- \$69
Level 4- \$44 or less	Level 4- \$69
Level 5- \$44 or less	Level 5- \$69
Level 4a- \$44 or less	Level 4a- \$69
Level 6- \$44 or less	Level 6- \$69
Level 4aa- \$44 or less	Level 4aa- \$69
Level 7- \$44 or less	Level 7- \$69

Partial pricing based on 60g of color or less, unless stated otherwise. Does not include haircut. After 60g, a \$25 “additional mix” charge will be added for every additional 120g or less.

Full pricing based on 120g of color or less, unless stated otherwise. Does not include haircut. After 120g, a \$25 “additional mix” charge will be added for every additional 120g or less.

If hair is in fragile condition, we will use lightener or color with Bonder inside for an additional \$36 charge per mix. Bonder will help rebuild the bonds in your hair and prevent up to 70% of breakage, ensuring soft, shiny hair after a chemical service.

Color Block/Creative Coloring- Price available upon consultation

Block coloring is taking large, medium, or small sections of hair in different areas & coloring to achieve a variety of different looks. Block coloring is kind of a blanket term for any coloring technique in which the stylist is creating a multi-color look other than highlighting or lowlighting. Also known as split color, fantasy color, vivid hair, etc. Price and appointment based on free consultation.

<https://form.jotform.com/202865246308053>



Peek-a-boo/Accent Color or

Optimal Peek-a-boo accent color with Balancing Toner/Glaze/Vivid Color

Peekaboo highlights are a small section of colored locks hidden under the top layer of hair. While wearing the hair down, these hair highlights typically cannot be seen, especially when the hair has no movement. They've been used in a variety of ways. Whether you want to add a pop of bright, bolder color into your natural hue or give some added interest to your hairstyle, the playful placement of this color trend is what makes it so fun and unique.



<u>Peek-a-boo/Accent Color</u>	<u>Peek-a-boo/Accent Color with Balancing Glaze/Vivid Color</u>
Level 1- \$59	Level 1- \$104
Level 2- \$63	Level 2- \$108
Level 3- \$68	Level 3- \$112
Level 4- \$71	Level 4- \$116
Level 5- \$75	Level 5- \$120
Level 4a- \$75	Level 4a- \$120
Level 6- \$79	Level 6- \$124
Level 4aa- \$79	Level 4aa- \$124
Level 7- \$83	Level 7- \$128

Pricing based on 120g of color or less, unless stated otherwise. Does not include haircut. After 120g, a \$25 “additional mix” charge will be added for every additional 120g or less.

If hair is in fragile condition, we will use lightener or color with Bonder inside for an additional \$36 charge per mix. Bonder will help rebuild the bonds in your hair and prevent up to 70% of breakage, ensuring soft, shiny hair after a chemical service.

Optimal service will be based on 226g of color or less and include a custom balancing glaze or vivid overlay.

Platinum Blondes

Pricing based on 120g of color or less, unless stated otherwise. Does not include haircut. After 120g, a \$25 “additional mix” charge will be added for every additional 120g or less.

If hair is in fragile condition, we will use lightener or color with Bonder inside for an additional \$36 charge per mix. Bonder will help rebuild the bonds in your hair and prevent up to 70% of breakage, ensuring soft, shiny hair after a chemical service.

“Just the Roots” Lightening and Custom Balancing Glaze

Already all-over blonde and just need a touch up? If it has been 6 weeks since your last service, this is a great way to get you back to your blonde!



Level 1- \$199

Level 2- \$207

Level 3- \$215

Level 4- \$223

Level 5- \$231

Level 4a- \$231

Level 6- \$239

Level 4aa- \$239

Level 7- \$247

Pricing based on 360g of color or less, unless stated otherwise. Does not include haircut. After 360g, a \$25 “additional mix” charge will be added for every additional 120g or less.

If hair is in fragile condition, we will use lightener or color with Bonder inside for an additional \$36 charge per mix. Bonder will help rebuild the bonds in your hair and prevent up to 70% of breakage, ensuring soft, shiny hair after a chemical service.

“The Overgrown” Lightening and Custom Balancing Glaze

If it's been 6-12 weeks since you had your all-over blonde touched up, this is the one for you. If your regrowth is greater than 1 1/2 inches, a consultation is required.



Level 1- \$276

Level 2- \$288

Level 3- \$300

Level 4- \$312

Level 5- \$324

Level 4a- \$324

Level 6- \$336

Level 4aa- \$336

Level 7- \$348

Pricing based on 480g of color or less, unless stated otherwise. Does not include haircut. After 480g, a \$25 "additional mix" charge will be added for every additional 120g or less.

If hair is in fragile condition, we will use lightener or color with Bonder inside for an additional \$36 charge per mix. Bonder will help rebuild the bonds in your hair and prevent up to 70% of breakage, ensuring soft, shiny hair after a chemical service.

All Over Platinum/Platinum Card

Going platinum is a major project! A complementary consultation is necessary to ensure that your goals, our processes, and the health of your hair are in alignment.

<https://form.jotform.com/202865246308053>



Level 1- \$400+, consultation required

Level 2- \$400+, consultation required

Level 3- \$400+, consultation required

Level 4- \$400+, consultation required

Level 5- \$400+, consultation required

Level 4a- \$400+, consultation required

Level 6- \$400+, consultation required

Level 4aa- \$400+, consultation required

Level 7- \$400+, consultation required

Pricing based on 600g of color or less, unless stated otherwise. Does not include haircut. After 600g, a \$25 “additional mix” charge will be added for every additional 120g or less.

If hair is in fragile condition, we will use lightener or color with Bonder inside for an additional \$36 charge per mix. Bonder will help rebuild the bonds in your hair and prevent up to 70% of breakage, ensuring soft, shiny hair after a chemical service.

Corrective Color- Price Available Upon Consultation

A color correction is usually a drastic change from what your hair currently is. Whether you have unwanted tones, non-blended highlights, want to return to your natural color after years of coloring, etc., a consultation is necessary to accurately reserve a time spot. You may be in the salon for a while for this reservation so be sure to bring snacks or an activity! Please call or fill out the following link for a consultation: <https://form.jotform.com/202865246308053>

Texture Services

What is a perm?

Simply put, a hair perm (or permanent wave) is a chemical service that permanently alters your hair texture by breaking the bonds of your hair and resetting them. Whether you desire big beach waves, spiral curls, or effortless

texture, modern perm techniques. Can help you achieve various looks—so you won't have to worry about looking stuck in the '80s!

When cared for properly, most perms can last anywhere from three to six months, depending on the length and texture of your hair. The larger the curl the less longevity you will get. Which can lead up to only lasting 4 weeks for bigger curls.

Classic Perm

Big or small S-shaped curls.



Level 1- \$111

Level 2- \$121

Level 3- \$131

Level 4- \$141

Level 5- \$151

Level 4a- \$151

Level 6- \$161

Level 4aa- \$161

Level 7- \$171

Does not include haircut.

Spiral Perm

Big or small corkscrew, coiled curls.



Level 1- \$143

Level 2- \$153

Level 3- \$163

Level 4- \$173

Level 5- \$183

Level 4a- \$183

Level 6- \$194

Level 4aa- \$194

Level 7- \$203

Does not include haircut.

What is a Keratin?

Keratin smoothing treatments are designed to make your hair healthier while addressing individual needs and hair type. Each of our treatments eliminates frizz, increases manageability, repairs damage, and leaves the hair noticeably softer with luminous shine! You'll notice shorter blow dry time too! This is not a straightening service but will relax your

curl pattern to a slightly larger curl. When you introduce blow drying & round brushing or flat ironing it will mend frizzy, unmanageable locks and turn them into super shiny tresses that will emphasize the look of healthy hair. We use Keratin Complex; the only Keratin Treatment approved by OSHA.

- **Time-Saving:** If you usually style your hair straight, a keratin hair-straightening treatment could shorten your blow-dry time by 40% to 60%.
- **Farewell, Frizz:** You can forget about frizzy hair after treatment. You could walk out in moist or light rain and your hair won't change.
- **Wait Before You Wash:** When receiving an Express Treatment wait 8 hours after treatment before shampooing. When receiving a Full Treatment wait 3 days after treatment to shampoo. The solution takes time to work it's magic.
- **Upkeep:** Sodium-sulfate-free shampoo to help maintain the treatment

Keratin Full

Enjoy up to 4-6 months of smooth, shiny, manageable hair with our award-winning signature smoothing solution.



Level 1- \$350

Level 2- \$350

Level 3- \$350

Level 4- \$350

Level 5- \$350

Level 4a- \$350

Level 6- \$350

Level 4aa- \$350

Level 7- \$350

Does not include haircut.

Keratin Express

This color-locking, speedy smoothing solution is an express service that delivers polished, more manageable hair with results that last up to 4-6 weeks.



Level 1- \$175

Level 2- \$175

Level 3- \$175

Level 4- \$175

Level 5- \$175

Level 4a- \$175

Level 6- \$175

Level 4aa- \$175

Level 7- \$175

Does not include haircut.

What is Qiqi?

Qiqi is a NEW & advanced straightening service that can achieve 0-100% curl reduction on all hair types! Add shine & smoothness while completely eliminating frizz. Qiqi is 100% damage free and safe for chemically treated hair.

Qiqi Seriously Straight Service

Permanently removes the maximum amount of curl and frizz.



Level 1- \$425

Level 2- \$425

Level 3- \$425

Level 4- \$425

Level 5- \$425

Level 4a- \$425

Level 6- \$425

Level 4aa- \$425

Level 7- \$425

Does not include haircut. Longevity dependent on home haircare. Prices based on short length hair with medium thickness. Additional Charges due to hair length, texture, and/or density will be given at final consultation before service.

Qiqi Reclaim Your Time Service

Permanently reduce curl pattern & control frizz. Softens the curl without completely removing it.



Level 1- \$375

Level 2- \$375

Level 3- \$375

Level 4- \$375

Level 5- \$375

Level 4a- \$375

Level 6- \$375

Level 4aa- \$375

Level 7- \$375

Does not include haircut. Longevity dependent on home haircare. Prices based on short length hair with medium thickness. Additional Charges due to hair length, texture, and/or density will be given at final consultation before service.

Qiqi Curls Just Wanna Have Fun Service

Temporarily add shine, strength, and definitions while maintaining your natural curl pattern.



Level 1- \$275

Level 2- \$275

Level 3- \$275

Level 4- \$275

Level 5- \$275

Level 4a- \$275

Level 6- \$275

Level 4aa- \$275

Level 7- \$275

Does not include haircut. Longevity dependent on home haircare. Prices based on short length hair with medium thickness. Additional Charges due to hair length, texture, and/or density will be given at final consultation before service.

Extension Services

Extensions cannot be refunded. Exchanges accepted if the hair has not been worn yet.

Halo Piece

What is it?

The world of extensions was revolutionized by The Halo! Designed with comfort in mind, the easy application of The Halo will transform your hair in a matter of seconds. This innovative extension is non-damaging & virtually undetectable. There is no complicated and lengthy process, no weaving, no clips, no glue. You won't need to be planted in a chair for 7 hours. HALOCOUTURE® Extensions easily attach with a miracle wire that is quickly customized to fit your head in just a few short minutes. Halo hair extensions are made from the finest 100% Remy Human Hair.



What to expect

Appointment #1- Complementary Consultation

15 minute appointment to go over color, length, type of halo, etc. Some Halos might need to be color adjusted once they come in to be a seamless match. Normal color costs would apply.

Purchase agreement will be reviewed & filled out whether or not you wish to purchase the halo, we will keep the information on file for when you're ready!

View our Purchase Agreement [here](#)

Appointment #2- Halo Fitting *and or* Cut

Once your Halo Piece comes in you'll be scheduled for a 30 minute fitting appointment that is included in the price of your Halo Piece. Be sure to come with clean, dry hair.

We'll teach you how to install, care for, and style your Halo Piece.

If you wish to have a customized cut on your Halo Piece or need an adjustment to your haircut to better blend with the piece, we will schedule an additional 15 minutes onto your Fitting appointment to tweak & refine. Normal haircut costs would apply.

Going Forward....

Your Halo Piece should be washed & styled every 21 wears. Air dry & style on low heat. If you'd like to have your Halo Piece professionally washed & styled, normal blow out costs apply.

Pricing

<i>Original Halo Piece</i>	<i>Layered Halo Piece</i>
12 inch.....\$355	14 inch.....\$485
16 inch.....\$455	18 inch.....\$585
20 inch.....\$555	22 inch.....\$685
24 inch.....\$655	
<i>Original Balayage Halo Piece</i>	<i>Layered Balayage Halo Piece</i>
12 inch.....\$455	14 inch.....\$485
16 inch.....\$555	18 inch.....\$585
20 inch.....\$655	22 inch.....\$685
24 inch.....\$755	

Expedited Shipping Options are available upon request.

Halo The Fall

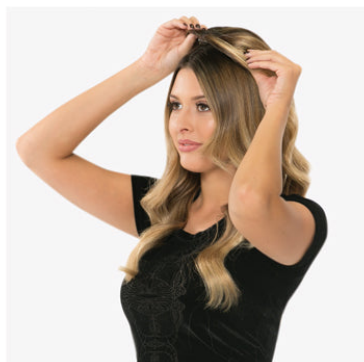
What is it?

Halo Fall combines a hairpiece & a topper for natural-looking coverage and comfort. The Fall creates instant volume and coverage in seconds!

The Original Fall uses hand-tied wefts on a breathable lace base.

The Hybrid Fall is a combination of hand-tied and machine-tied wefts on a fabric base.

Each Fall is installed using 4 clips that secure comfortably to the natural hair without causing breakage & provide seamless coverage. Halo hair extensions are made from the finest 100% Remy Human Hair.



What to expect

Appointment #1- Complementary Consultation

15 minute appointment to go over color, length, type of halo, etc. Some Halos might need to be color adjusted once they come in to be a seamless match. Normal color costs would apply.

Purchase agreement will be reviewed & filled out whether or not you wish to purchase the halo, we will keep the information on file for when you're ready!

View our Purchase Agreement [here](#)

Appointment #2- Halo Fitting *and or* Cut

Once your Halo Fall comes in you'll be scheduled for a 30 minute fitting appointment that is included in the price of your Halo Fall. Be sure to come with clean, dry hair.

We'll teach you how to install, care for, and style your Halo Fall.

If you wish to have a customized cut on your Halo Fall or need an adjustment to your haircut to better blend with the piece, we will schedule an additional 15 minutes onto your Fitting appointment to tweak & refine. Normal haircut costs would apply.

Going Forward....

Your Halo Fall should be washed & styled every 21 wears. Air dry & style on low heat. If you'd like to have your Halo Fall professionally washed & styled, normal blow out costs apply.

Pricing

<i>The Fall</i>	<i>The Fall Balayage</i>
\$915	\$1,015
<i>The Fall Hybrid</i>	<i>The Fall Hybrid Balayage</i>
\$535	\$635

Expedited Shipping Options are available upon request.

Weft Extensions

What is it?

Wefts are a semi-permanent method of adding length and volume. Wefts are comfortably secured by a non-slip, silicone lined bead. Once sewn onto the base they are virtually undetectable. We offer two brands of wefts extensions; your stylist will consult with you to figure out what is the best type for you. Extensions are made from the finest 100% Remy Human Hair.



What to expect

Appointment #1- Complementary Consultation

15-30 minute appointment to go over color, length, type of extensions, etc. Some wefts might need to be color adjusted once they come in to be a seamless match. Normal color costs would apply.

Purchase agreement will be reviewed & filled out whether or not you wish to purchase the hair, & we will keep the information on file for when you're ready!

View our Halo Weft Purchase Agreement [here](#)

View our Bellami Weft Purchase Agreement [here](#)

Appointment #2- Weft Installation

Your second appointment would be the installation of your Weft. Come with clean dry hair & be ready for a long appointment. Depending on how many rows we're installing, the appointment could be over 3.5 hours.

Installation Cost is \$195/row.

Appointment #3- Weft Bump Up

4-8 weeks after your first application you'll be ready for a bump up! We will use the same hair & adjust the Weft to sit closer to the root. Come with clean dry hair. Appointment time varies but will not be as lengthy as initial installation.

Bump Up Cost is \$70/row.

Appointment #4- Weft Reapplication

4-8 weeks after your Bump Up, a Reapplication is recommended. We would remove the Weft extensions and reapply using the same hair. Come with clean dry hair.

It is recommended to purchase new Weft Extensions at this point for the next Installation. The appointment cycle would begin again at this point.

Reapplication Cost is \$170/row.

At any point in this cycle, you can choose to do a Weft Removal. Removal Cost is \$50/row.

Pricing per Weft

<i>16" Hand Tied Original</i>	<i>16" Machine Tied Original</i>
\$195 per Weft	\$180 per Weft
<i>16" Hand Tied Balayage</i>	<i>16" Machine Tied Balayage</i>
\$205 per Weft	\$190 per Weft

<i>20" Hand Tied Original</i>	<i>20" Machine Tied Original</i>
\$230 per Weft	\$210 per Weft
<i>20" Hand Tied Balayage</i>	<i>20" Machine Tied Balayage</i>
\$240 per Weft	\$220 per Weft

A \$42 Supply charge will be added for the beads, thread & shipping.

Expedited Shipping Options are available upon request.

Treatments

Acidic Bonder Treatment-\$20

Deep conditioning treatment designed to return your hair back to its healthy pH, improving softness, shine, and manageability.

Pre-Art-\$17

A deep clarifying treatment to pull out build-up. Great for those who swim, have well water, or use products. Will allow for more predictable color results, especially with blondes.

Deluxe Acidic Bonder-\$27

Begin with a Pre-Art and finish up with our Acidic Bonding Concentrate Treatment for a discounted price!

CAT Treatment-\$17

A lightweight treatment designed to add immediate strength without weighing your hair down. Will help to prevent breakage & split ends.

Metal Detox-\$40

A deep clarifying treatment that works while your color sits on! No need to wait- you'll FEEL the build-up leaving your hair.

Level System:

We have a price level system in our salon. The service price is based on the demand that our service providers have earned on their time. Each service provider has attended Elements of Style Associate Program, which is similar to getting a master's degree in our profession. The level price menu is to create a longevity of the service providers in the salon companies. All of our service providers are very talented and promise to deliver an outstanding guest experience each time you come in. Being a price level salon means we can meet all beauty budgets of the community.

Experience the difference:

You will receive a Cost to Create at your first visit with us. We are more than happy to supply one at any additional appointments per your request.

Quiet appointments:

We know we can be chatty at times. If you are working or on a conference call or just want to escape the noisy world, please ask for a quiet appointment. We will still give you a professional consultation, but after you can have a quiet appointment. Please request this at the time of booking.

HOW TO TALK TO YOUR COLORIST: **HAIRCOLOR TERMS & DEFINITIONS**

1. **Basecolor:** Color applied at the root area or all-over before a dimensional/creative color technique is done.
2. **Contrast:** Contrast is a value applied to highlights. High-contrast highlights are much lighter than the surrounding hair and provide a dramatic look. Lower contrast highlights result in a more natural look.
3. **Cool:** Cool is a tonal value that can apply to blonde, brunette, and red shades. A color is said to have “cool tones” if it tends toward blue, violet or green. Cool colors include platinum blondes, ash browns, and plum reds.
4. **Coverage:** Coverage is a measure of a haircolor’s ability to cover gray. Some haircolor formulations are too transparent to effectively cover gray hair. Redken Permanent Haircolor provides exceptional gray coverage with resistance to fading.
5. **Dimension:** Dimension is a function of the range of tones in your hair. A head of hair that is all one color is said to be “flat” or lacking dimension. Your stylist can add dimension to your hair with highlights or lowlights.
6. **Double-process:** A double-process color refers to anytime two color services are done in one visit. Generally this is done by doing the first color

service, washing and drying the hair, then doing the second color. This can include lightening the hair then applying a toner, or doing a permanent color followed by a glaze.

7. **Glaze:** Glazes involve using a semi-permanent color to enhance, enrich, change, match, tone down or intensify natural or color-treated hair while harmonizing contrast.

8. **Hair Painting:** Hair Painting, also known as balayage, is the process of free-handing or sweeping hair color, lightener or toner downwards in soft strokes directly on the surface of the desired section. This method is used to create dimension with a natural, softer look.

9. **Highlights:** Highlighting hair means isolating select strands in the hair and treating them with a haircolor or lightener to make them lighter than their base/natural color. Highlights can add dimension by contrasting with the rest of the hair and are created with foils, a cap or special combs or brushes used for “painting on” the color.

10. **Lift:** Lift is the chemical process of lightening the color of the hair. Different haircolor formulations have different lifting abilities.

11. **Lowlights:** Lowlights are created by using color with foils, caps, or painted on to darken specific pieces and create dimension. Generally low lights will be 2-3 levels darker than your basecolor and slightly warmer. This can be used for a more natural look or create accents within the hair.

12. **Rebalancing:** Rebalancing is the process of bringing the hair back into balance, and can be created with the combination of highlights and lowlights, and/or glazes.

13. **Single-process:** A single process refers to any color service that is done in one step. This can be using a permanent color that lifts and deposits, a glaze, highlights/lowlights without toning, or a creative color service with only one process.

14. **Texture:** Texture, as defined by the diameter of an individual hair strand, is generally described as fine, medium, or coarse. Your stylist will factor in

your hair's texture when determining your best color formulation.

15. **Trend Pastel:** Trend Pastel refers to the softened, lightened hues of colors such as red, purple, green, orange, yellow, or blue. Pastel tones of color are meant as colorants and toning shades, and are best achieved when applied to very pale blonde hair to create for example pink, lavender, mint green tones.

16. **Tone:** Tone, in haircoloring, is the term used to describe a specific color —"golden" blonde, "coppery" red, "ash" brown. Colors are divided into warm tones and cool tones.

17. **Warm:** Warm is a tonal value that can apply to blonde, brunette, and red shades. A color is said to have "warm tones" if it tends toward yellow, orange or red. Warm colors include golden blondes, auburn brunettes, and coppery

18. **Optimal:** Optimal services will include a pH balancing custom glaze.